

MONTHLY MEMBERSHIP PROGRESS REPORT

LOCATION INDIA

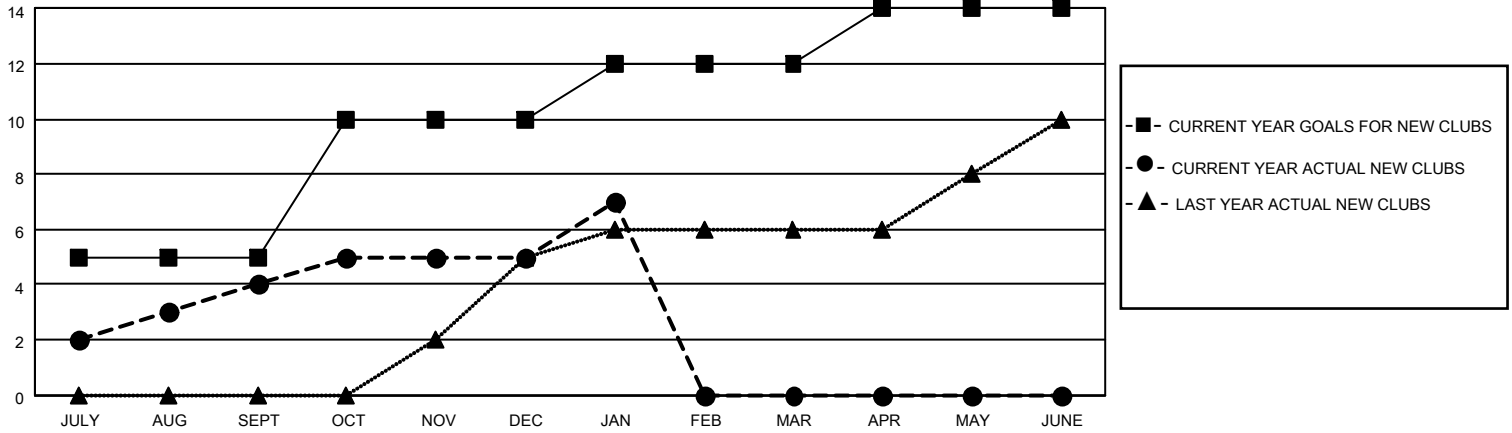
District 3234D1

Results as of: 1/31/2022

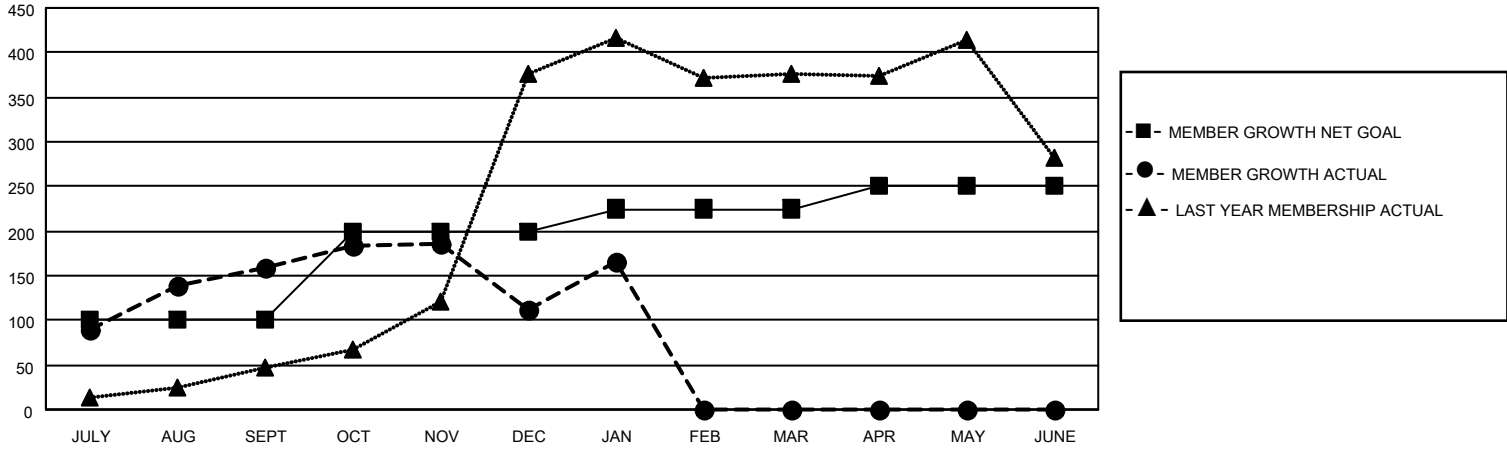
Clubs			
RESULTS FOR 2021-2022			
QUARTER	NEW CLUB GOAL	NEW CLUBS	DROPPED CLUBS
JULY/AUG/SEPT	5	4	0
OCT/NOV/DEC	5	1	3
JAN/FEB/MAR	2	2	0
APR/MAY/JUNE	2	0	0

Members			
RESULTS FOR 2021-2022			
QUARTER	MEMBER GROWTH NET GOAL	MEMBER GROWTH ACTUAL	DROPPED MEMBERS ACTUAL (including transfers)
JULY/AUG/SEPT	100	194	32
OCT/NOV/DEC	100	45	91
JAN/FEB/MAR	25	82	6
APR/MAY/JUNE	25	0	0

GOALS AND ACTUAL NEW CLUBS CUMULATIVE



GOALS AND ACTUAL MEMBERS CUMULATIVE



DROPPED CLUBS: 3

30 CLUBS OF 75 ADDED 1 OR MORE NEW MEMBERS

GENDER DISTRIBUTION

DROPPED MEMBERS

DECEASED	8
CLUB CANCELLED	38
OTHER	83
TOTAL	129

MALE	1,917 (72.53%)
FEMALE	726 (27.47%)
NON BINARY	0 (0.00%)
PREFER NOT TO ANSWER	0 (0.00%)

[CLICK HERE FOR CUMULATIVE MEMBERSHIP DATA](#)

TOTAL FAMILY UNIT MEMBERS	925
FAMILY MEMBERS PAYING HALF DUES	478